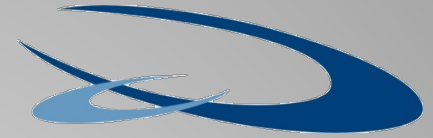


# **Broward County Transit Shelters & Amenities Program**

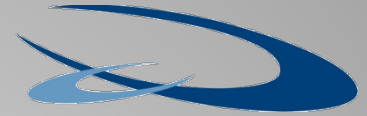
Prepared by  
Broward County Transportation Department  
Service and Capital Planning Section

February 12, 2010

# Outline



- Objective
- Background
- Project Approach
- Project Goals
- Bus Stop Infrastructure
- Looking Ahead



# Project Objectives

- Increase the number of shelters, seating areas, and transit amenities at bus stops.
- Develop and implement branding of the Breeze - Limited Bus Stop Service.

# Project Background



- BCT prepared a Countywide Action Plan to increase the number of shelters and transit amenities at bus stops.
- Included in the plan are specific shelter designs adopted by municipalities and developed design concepts proposed by the Broward County Transportation Department.
- The program is funded by \$23.5 Million Federal XU and ARRA/Stimulus funds
  - \$10.0 Million Federal XU funds (MPO)
  - \$11.1 Million ARRA/Stimulus funds (Transit)
  - \$2.4 Million ARRA/Stimulus funds (FDOT)

# Project Approach



- Bus Stop Prioritization
  - High Ridership Stops
  - SR7 Bus Stops
  - Breeze - Limited Bus Stop Service
- Design Selection
  - County preferred designs
  - According to City Architecture and Preferences
  - Right-of-Way Availability
- Partnership with Municipalities
  - Design Development
  - Permitting Coordination
  - Maintenance Agreement



## Action Plan Goal

Install new shelters and transit amenities at a minimum of 679 bus stop locations.

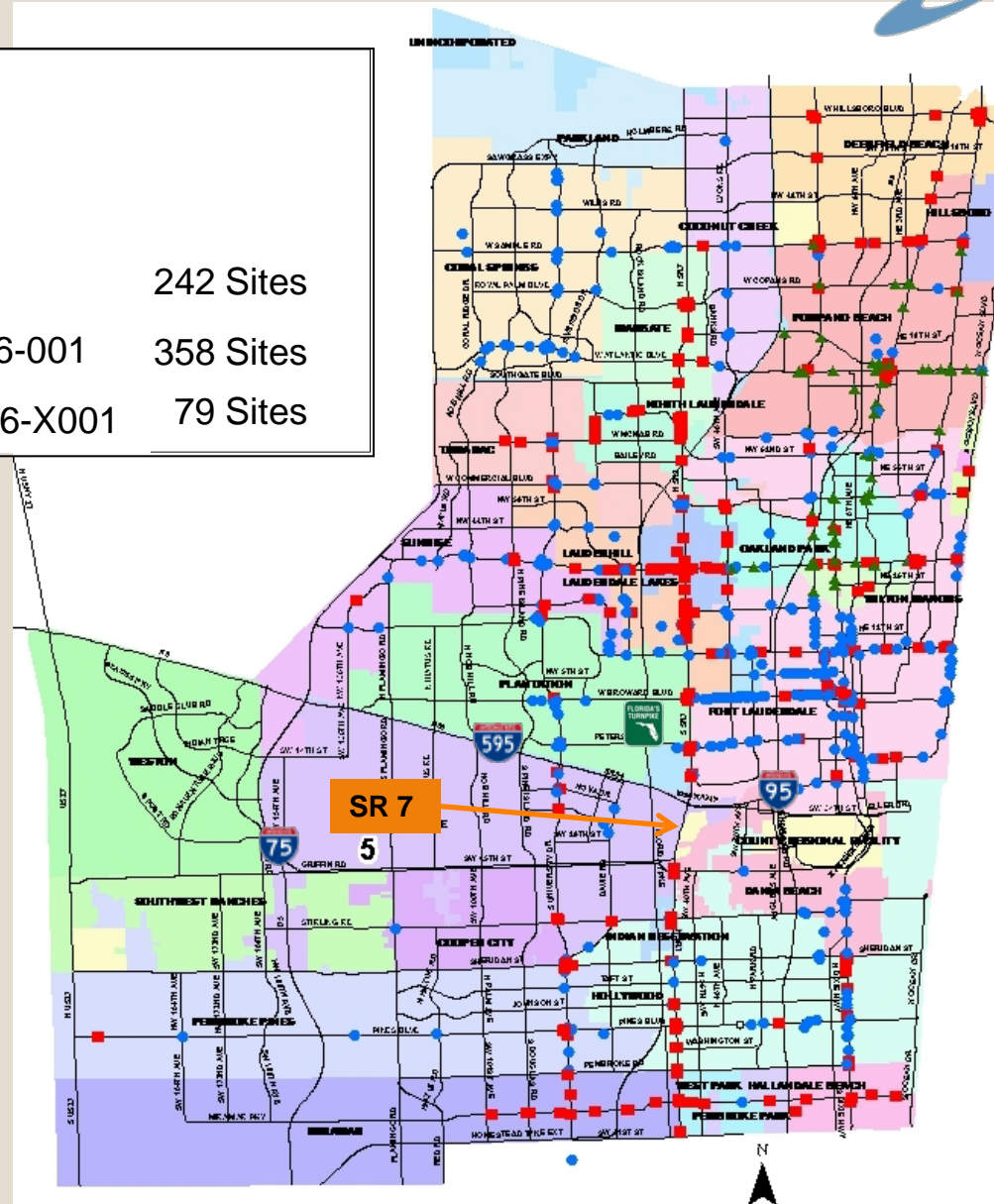
# Shelter Program Stops

## Legend

### Shelter Program Stops

### Funding Source

■	\$10.0M MPO	242 Sites
●	\$11.1M Stimulus Grant FL-96-001	358 Sites
▲	\$ 2.4M Stimulus Grant FL-66-X001	79 Sites



# Shelter Program Stops

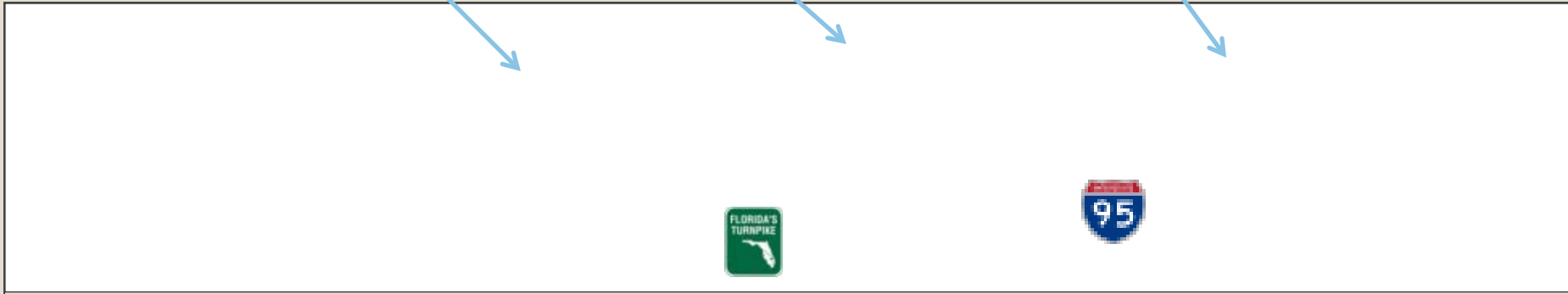


## Oakland Park Corridor

University Dr.

Andrews Ave.

SR 7



### Legend

- 18 Built –in-Place Shelters
- 33 Prefabricated Shelters
- Fixed Route
- Community Bus Route



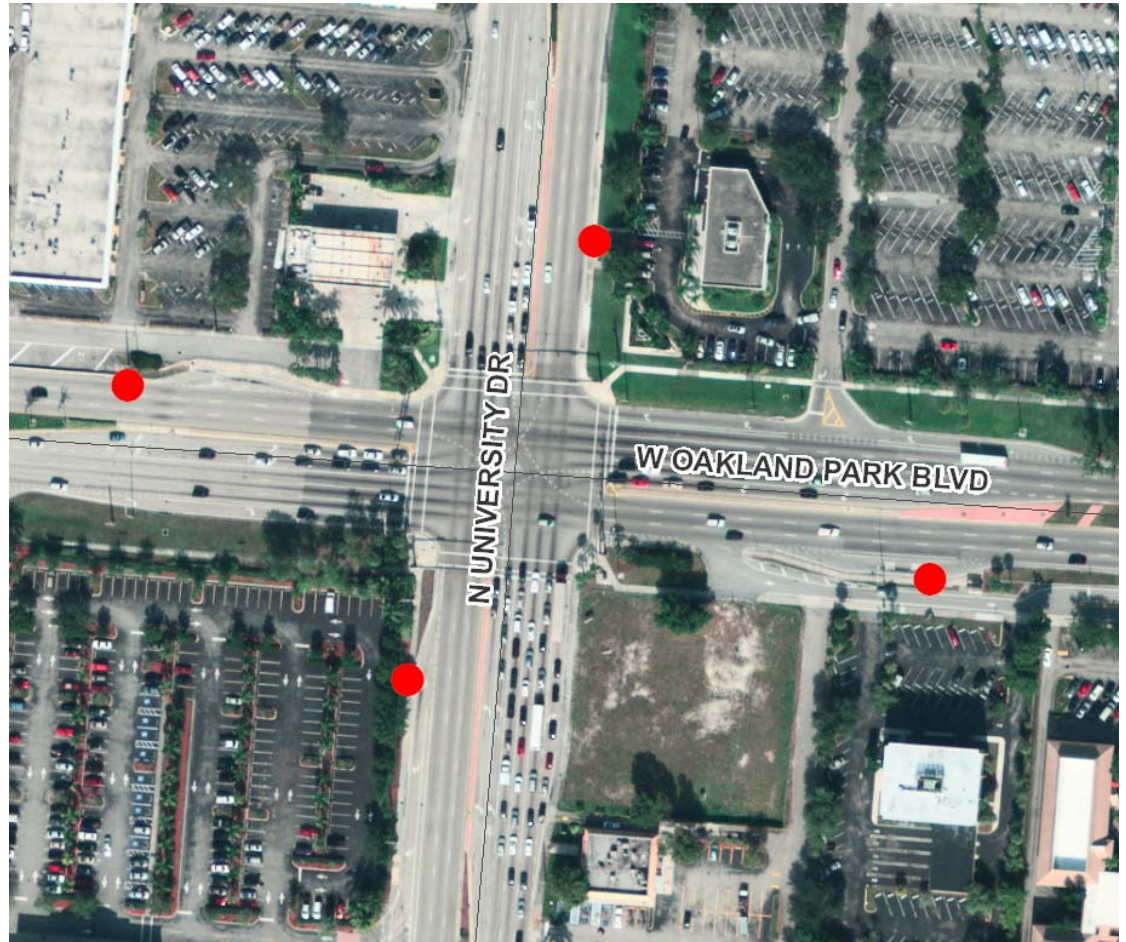
# Bus Stop Infrastructure

## Stop Placement



- **Good Condition**

- No Right Turn Lanes
- Stops Close to Intersection
- No Driveway Openings
- Proper Placement of Bus Bays



# Bus Stop Infrastructure

## Stop Placement



### • Challenges

- Long Right Turn Lanes
- Conflicts with Adjacent Land Use
- Driveway Openings
- Intersection Congestion
- Limited Right-of-Way





# Bus Stop Infrastructure

## Stop Placement



- **Mix Conditions**

### East/West

- Conflicts with Right Turn Lanes
- Driveway Openings
- Easement Opportunities
- Limited ROW

### North/South

- NB/SB Proper Bus Bay Placement
- Available ROW



# Bus Stop Infrastructure



Ongoing Improvements with Available ROW



**Before**

**After**





# Bus Stop Infrastructure



## Ongoing Improvements with Limited ROW



**Before**



**After**

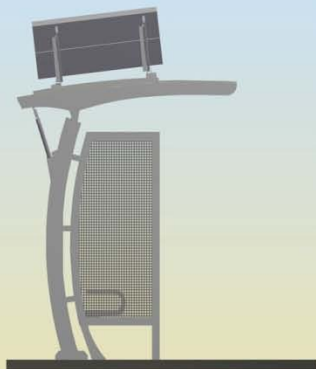


# New Shelter Program

## Prefabricated Shelter Designs on Oakland Park Blvd.



- Lauderdale Lakes
- Lauderhill
- Sunrise
- Oakland Park
- Wilton Manors



7'-0" WIDE SHELTER  
PROFILE VIEW



5'-0" WIDE SHELTER  
PROFILE VIEW



3'-0" WIDE SHELTER  
PROFILE VIEW



# New Shelter Program

## Large Shelter Designs on Oakland Park Blvd.



- Sunrise



- Wilton Manors





# New Shelter Program

## Large Shelter Designs on Oakland Park Blvd.



- **Lauderhill**



- **Lauderdale  
Lakes**



# Looking Ahead Oakland Park Blvd. in 3 Years



- 51 New Shelters
- Additional Amenities
- Upgraded Bus Bays
- New Bus Stop Signage
- ADA Accessible Bus Stops