

# Preliminary Agenda

## Southeast Florida Freight Summit: Implementing the Plan

We need **your** input to make this a success! Please take time out of your busy schedule to join us!

The agenda will provide updates on key initiatives as well as engage stakeholders in an open discussion on **key needs, priorities, and actions**.

Preliminary agenda topics to include:

### 1) Global Trade Expectations and Statewide Initiatives:

- Florida Trade and Logistics Study –Carrie Blanchard, Florida Chamber Foundation
- FDOT Initiatives – Robert Romig, Interim Assistant Secretary

### 2) Implementation at the Regional Level – Panel Discussion

- Port of Miami, Invited      Port Everglades, Invited
- Port of Palm Beach, Invited      FEC Railway, Invited

Implementing the Chamber plan at the regional level. Discussions of economic impacts from Infrastructure Investment, Trade Missions, Trade Pacts, Master Plans, ILCs, and Infrastructure Needs

### 3) Sustainable Communities Initiative– TCRPC, Invited, SFRPC, Invited

### 4) Priority Efforts and Responsibilities – Jeff Weidner, FDOT

- SE Florida Regional Freight Team Action Plan
- Prioritization Workshop

**When:** Friday, November 18, 2011  
12:30 pm to 4:30 pm

**Where:** Port Everglades  
1850 Eller Drive  
Fort Lauderdale, FL 33316  
Cruise Terminal 18



# Preliminary Agenda Southeast Florida Freight Summit: Implementing the Plan

## PLEASE RSVP TODAY!

The easiest way to RSVP is to email a response to the invitation email with your name and contract info.

Your alternate option is to complete and fax this form to Michael Williamson at Cambridge Systematics at 954-331-3886.

We look forward to seeing you there!

Name: \_\_\_\_\_  
Title: \_\_\_\_\_  
Organization: \_\_\_\_\_  
Email: \_\_\_\_\_  
Telephone: \_\_\_\_\_

Will Attend \_\_\_\_\_

Will Not Attend \_\_\_\_\_

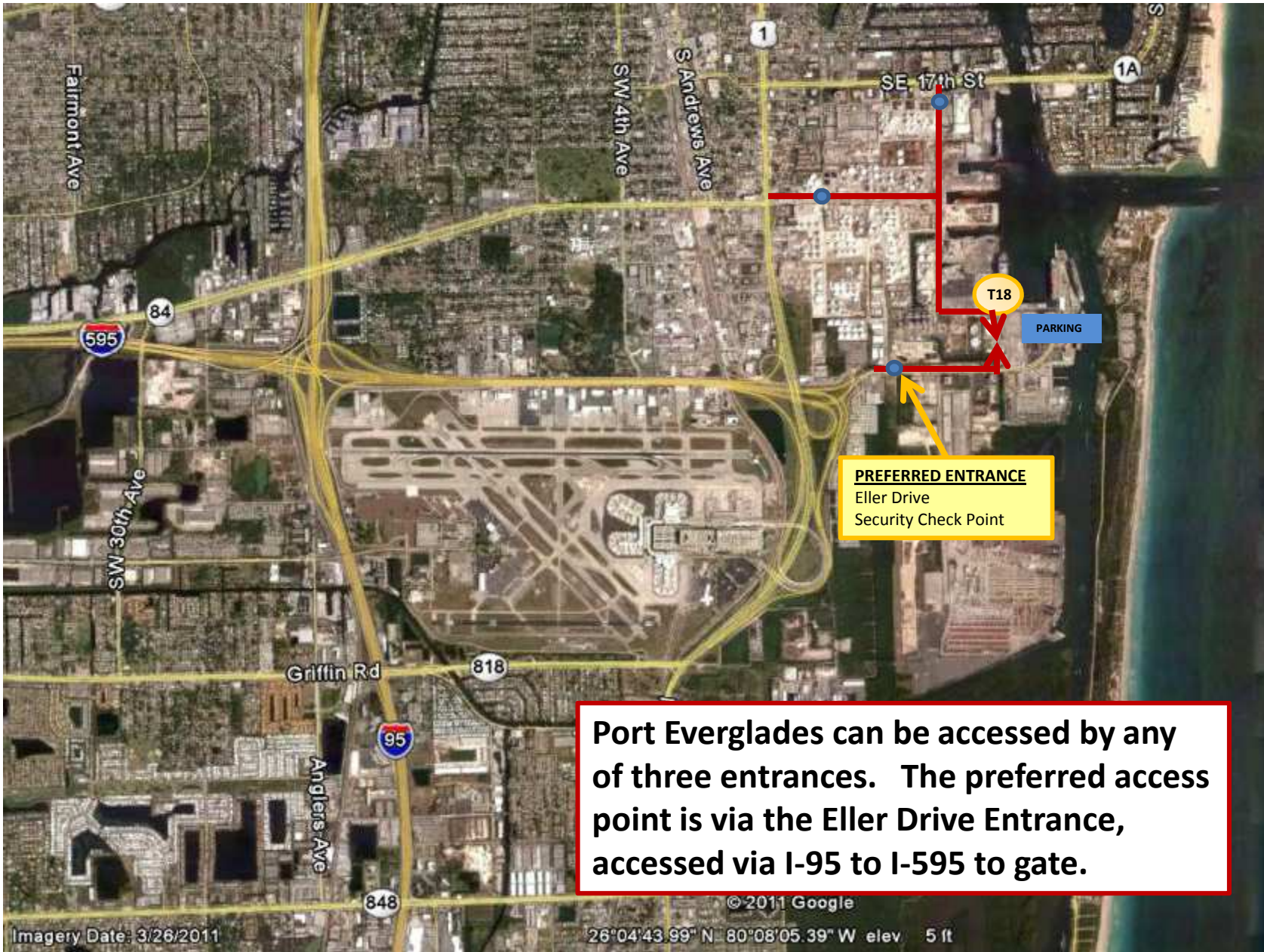
When: Friday, November 18, 2011  
12:30 pm to 4:30 pm

Where: Port Everglades  
1850 Eller Drive  
Fort Lauderdale, FL 33316  
Cruise Terminal 18

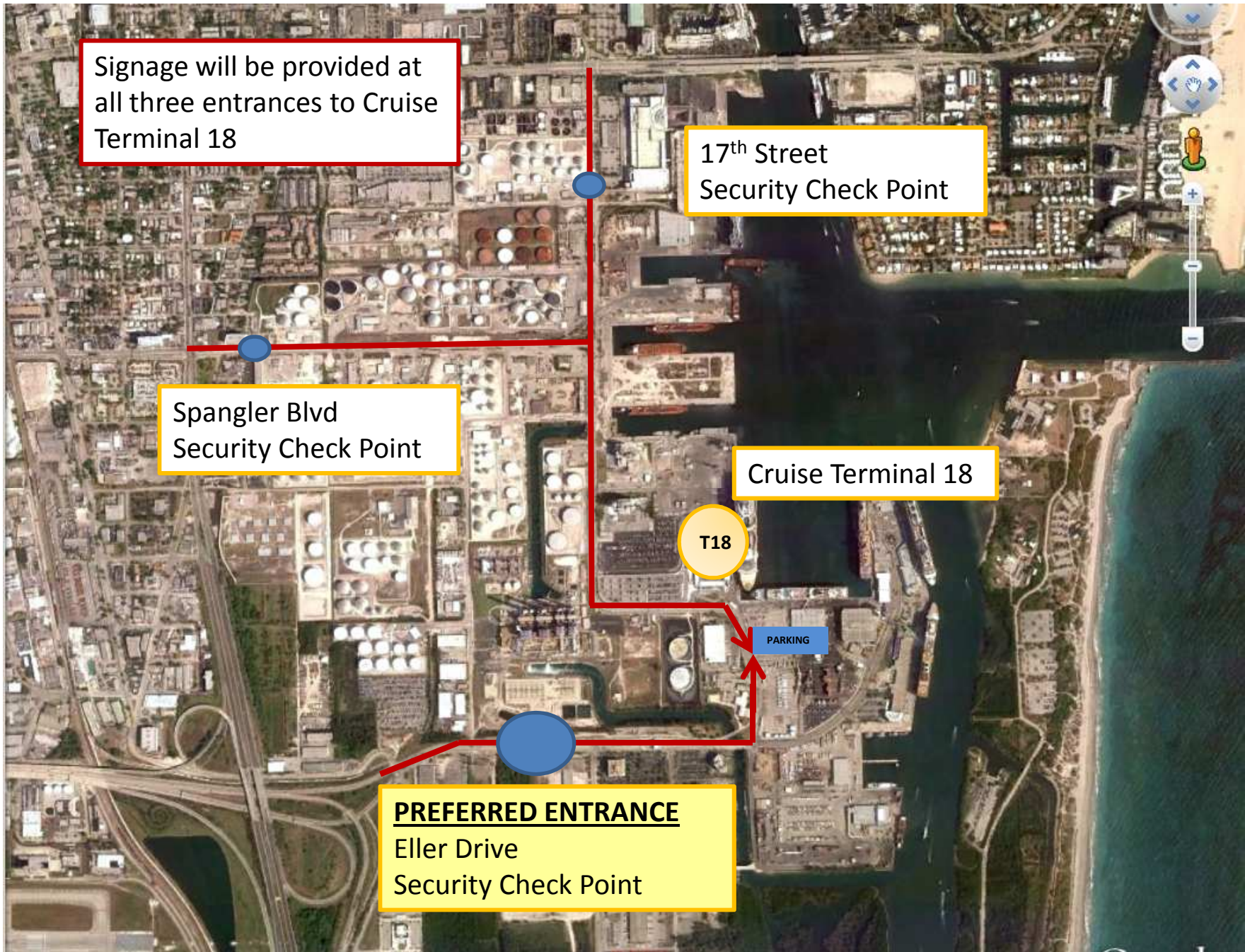


# Directions to Port Everglades

- Please join us at Port Everglades for the 2011 SE Florida Freight Summit.
- You can access Port Everglades from one of three gates. The preferred gate is Eller Drive, which is accessed via I-95 to I-595 eastbound.
- Once inside the Port, signage will be provided to direct you to Cruise Terminal 18.
- Please see attached maps.



**Port Everglades can be accessed by any of three entrances. The preferred access point is via the Eller Drive Entrance, accessed via I-95 to I-595 to gate.**



Signage will be provided at all three entrances to Cruise Terminal 18

17<sup>th</sup> Street Security Check Point

Spangler Blvd Security Check Point

Cruise Terminal 18

T18

PARKING

**PREFERRED ENTRANCE**  
Eller Drive Security Check Point